



Bright Perspectives. Glass Facade Systems.



Living for architecture means going new ways.

*As a specialist for suspended,
back-ventilated glass facades, in
recent years we have devised a
system with a competitive cost-
performance ratio that we continue
to develop further and optimise.
The Konvortec System is simple
to mount and captivates through
its sheer elegance and stylishness.
We accompany our clients right from
the beginning of the planning phase
with comprehensive and competent
technical and practical advice,
though to the completion of
the project.*

Arvid Thorwald Loboda

Arvid Thorwald Loboda
Geschäftsführer Konvortec®



www.konvortec.de

KONVORTEC® The System.



The system. High quality, durability and unique, simple elegance – more than ever, the material glass is synonymous with lasting build quality and highest design requirements. The most important pre-requisite in this context is the application of a technologically mature system concept that offers individual and, at the same time, economic solutions to different structural requirements. Precisely that was the aim in the development of our facade system.

Konvortec® is a suspended, back-ventilated glass facade that provides an ideal solution for many application areas. An elegant and frameless visual appearance with filigree, visible mounting brackets is the unmistakable hallmark of the technologically mature system. Variable support profiles made from aluminium, Konvortec® system glass in different shapes and colours and narrow gaps create a unique, high-quality finish. Whether coloured or transparent, with rear screen print or enamelled, with or without gap filler strips, with colour-coated mounting brackets, illuminated from inside or outside – numerous design variants can be realised very precisely,

simply and securely. The structural suspension technology is suited for the redesign of the facades of both new and old buildings, for solar systems, interior applications and trade fair construction.

The multi-functional system forms an extremely weatherproof and resistant exterior shell at the same time. A system thought through to the last detail that also sets its own standards for ease of installation. The wall brackets and support profiles with glass supports and spacers are quick to install in just a few steps. The glass panes are supplied with an exact fit – rounded corners using curved glass can also be realised. The Konvortec® glass facade system conforms to the relevant DIN standard - DIN 18516-4 part 1 and 4 - and is certified by the MPA NRW (Material Testing Institute, North-Rhine-Westphalia).

Exclusive facades with individual solutions



Combination. Variation.

Konvortec® combines the unique characteristics of the glass material with the most advanced facade technology. The support of a versatile and thought-through accessory range ensures that nearly any construction engineering and architectural requirements can be fulfilled.

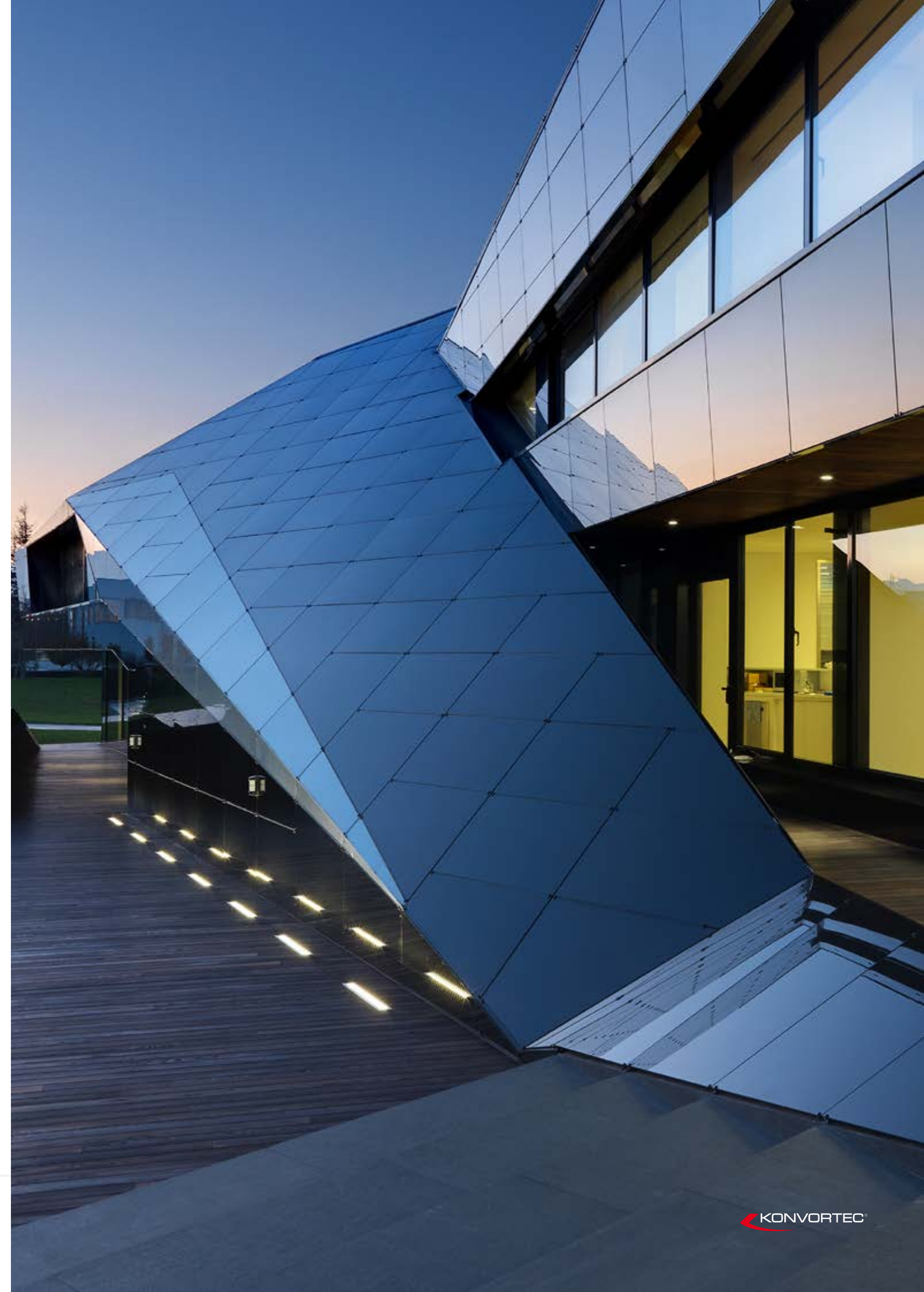
Design and function do not preclude each other, but rather form ideal combinations. Carefully matched detail solutions result in a facade finish that meets the highest quality standards. Glass and its creative use is especially well-suited for setting clear accents. The combination of different facade surfaces opens up a multitude of aesthetically convincing application options



Innovative.

Located in the hills around Cuneo, in Italy, is the 'Officina Vidre Negre', an office building designed by the Italian Damilano Studio architects. The bevelled black Konvortec® glass facade offers the visitor an impressive view. Sloping lines, overhangs and large window areas together form a strong and dynamic profile to the building surrounded by ample parklands. The facade is majestically reflected in the surface of the adjacent lake. The special demands on the facade created by the building's profile were ideally met by the Konvortec® system. The flexibility of the system components gave the planners the opportunity to realize their concept of form without any restrictions.

LEFT: The transitions between the glass facades and the wall and floor coverings of timber and stone were fashioned to be in a flowing style.





Technically demanding: Facade overhangs, angled and sloping surfaces

Structural Elegance.

Glass facades are increasingly popular with architects and clients. The transparent, reflective building material glass characterises a building's visual appearance. The glass in the system should give an undisturbed impression. Conventional facades frequently do not achieve this objective due to predominant support mechanisms and frames. The Konvortec® system was developed with the aim to provide mountings that are as filigree as possible and minimum gap widths within the framework of building regulations.

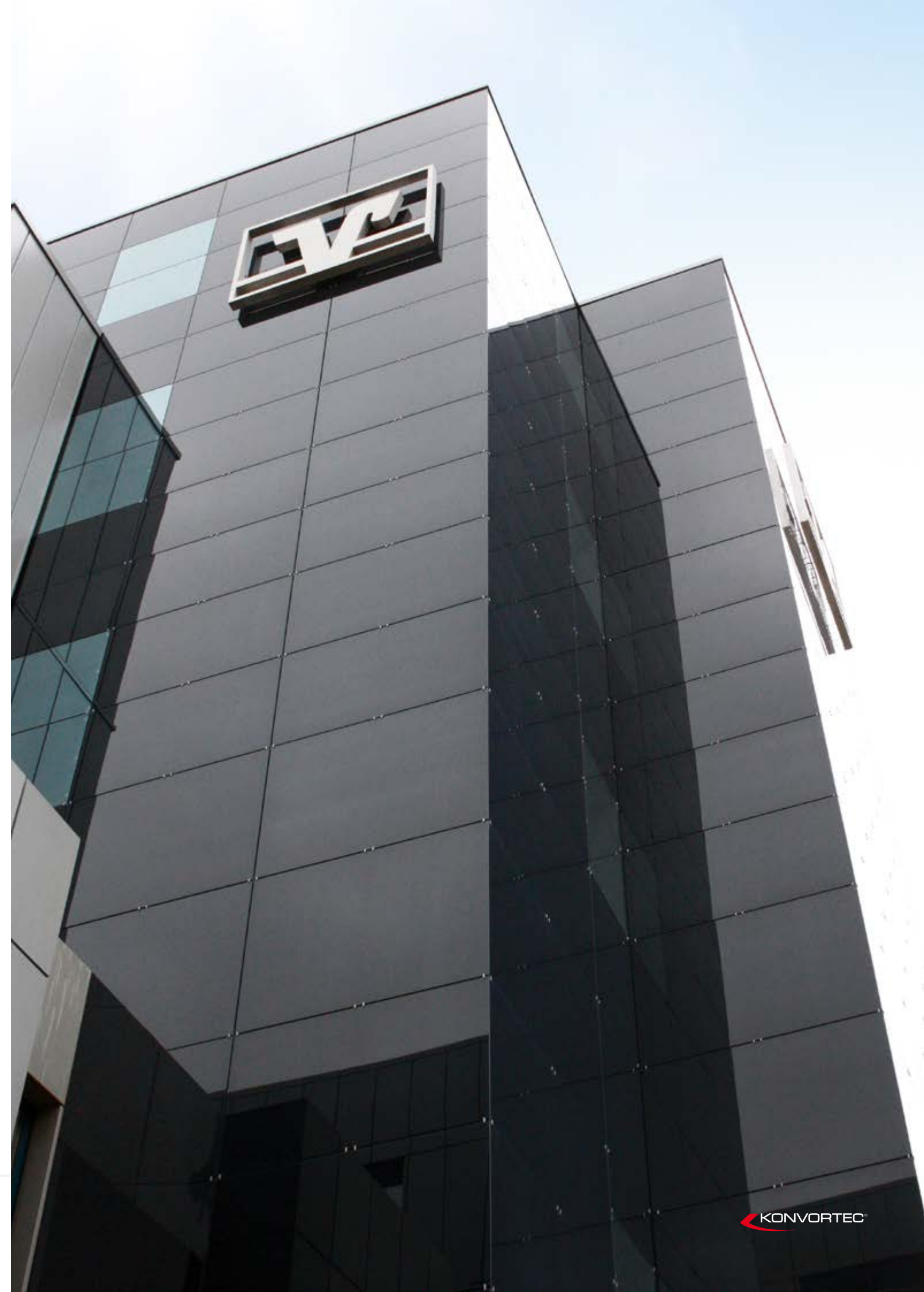
UPPER LEFT: Realisation of customer requirements
MIDDLE LEFT: Detailed view of mounting brackets
LOWER RIGHT: Close-up of corner connections



Distinctive. Clear. Representative.

Distinctive lines in the external view were one of the reasons for selecting a Konvortec® glass facade for the construction project of Volksbank in Lüdenscheid, Germany. This building with its clear lines and frameless finish provide a lasting presentation of the Volksbank. Suspended stainless steel logos, backlit logos that are flush with the facade surface as well as glass-covered windows (the light blue areas in the images) are further special features of this building.

UPPER LEFT: Glass-covered windows (light blue areas)
MIDDLE LEFT: Clear structure, memorable visual appearance
LOWER LEFT: Backlit logos flush with the surface



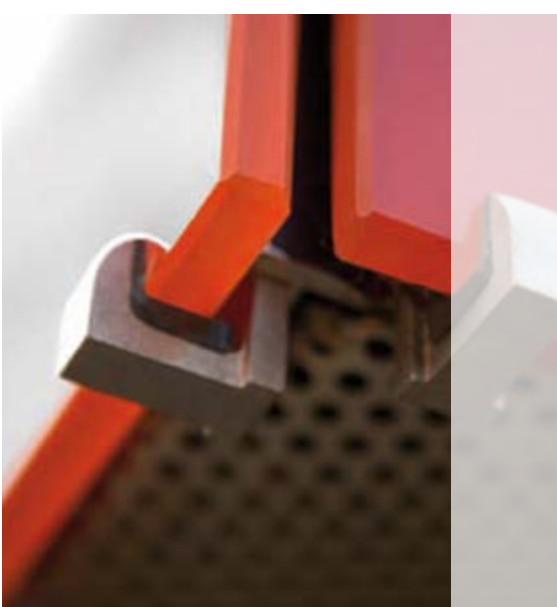


The building before refurbishment

Strikingly refurbished.

Excellent example of a refurbished building. To achieve a lasting weatherproof exterior shell and, at the same time, a clear creative uplift of the compact structure dating from the 70ies, the architects of the ch-quadrat planning office tasked with the refurbishment selected the Konvortec® system. Today, the glass skin with its crystalline colours replaces the drab old facade and gives the office building a completely new look. The glass facade was realised with a total of about 250 Konvortec® system glass panes in colour variations from red to yellow. At the same time, the integration of a 14 centimetres thick thermal insulation made it possible to reduce the energy costs to the level of a newly built property. The new glass facade gives the office building a totally different 'face'. The previously cheerless, grey facade from the seventies was transformed at relatively low expense into an elegant exterior with a signal effect. Five different shades of RAL colours were specially combined for this project. This suspended, back-ventilated Konvortec® glass facade enabled the architects to achieve an exact realisation of the design goals.

RIGHT: Filigree mounting brackets and narrow gaps are the unmistakable characteristics of the system.





KONVORTEC® shine

The structural integration of TVs and monitors into a wall system is simple and flexible, and the Konvortec® system offers the solution to realise this with elegance and sophistication. The screen is mounted behind a lightly mirrored and tinted glass pane. Here, the special effect is that the screen only becomes visible when it is switched on. It is then available for presentations in conference rooms and offices or as a visual highlight in foyers. Switched off, it remains entirely invisible.

Visions of light that fascinate.

Konvortec® shine brings glass walls and facades to life. The new LED technology creates exciting, multicoloured light effects, indirect lighting lends internal areas a pleasant ambience.





Backlit surfaces in the car port. An impressive illumination at night.

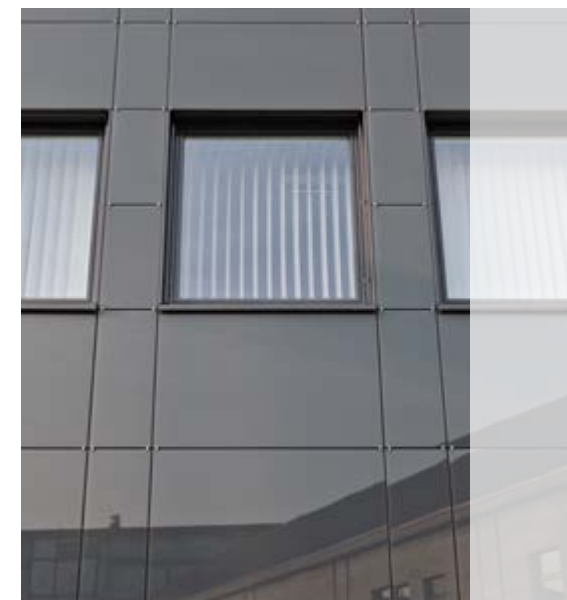


Illumination. Fascination.

State of the art. Under the guidance of the Hofstadt and Schneider architecture office, the headquarters of RWW were given a brand new face in addition to the renovation of the interior of the building. As a result of the specifications laid down for the building services, equipment and design, that the renovations were to be planned according to principles of sustainability, the Konvortec® glass facade was used as an important component in the design and energy use concepts for the building.

In addition, the RWW sign, which is backlit at night, and is integrated into the Konvortec® system glass panels, lends to the charismatic appearance of the cubic structure of the headquarters.

RIGHT: The detail of the new facade.







Corporate Identity.

- as shown by the annex to the energy consultation centre for the Schorndorf municipal utilities company, refurbished to be more energy efficient. To visually represent the company's corporate concept, a network map and the company's logo were integrated into the Konvortec® glass facade. The logo and network map are illuminated at night. For this purpose, the Konvortec® shine system glass was fitted at the back with partially spaced print and an LED backlighting system.

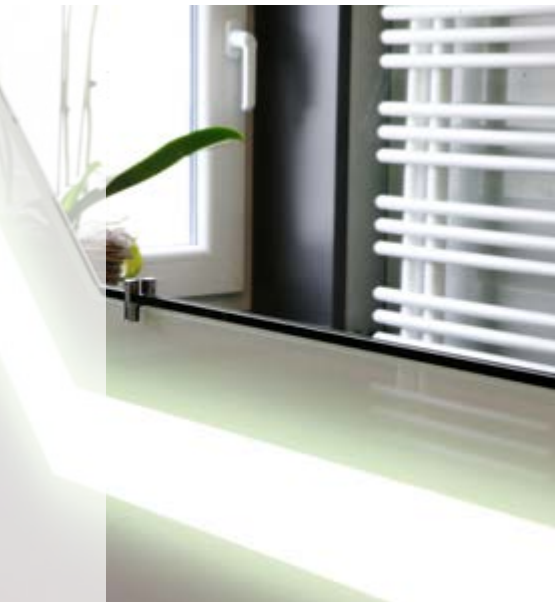
The corporate identity project was implemented to be both intelligent and informative and was also used in the design for the underpass to the main building. Visitors are shown the company's core data as they make their way to the company's offices.

LEFT: Impressions of the underpass
RIGHT: Exterior view of the new section of the building from across the street.
The backlit pictograms are visible during the hours of darkness (see previous page).

ARCHITECT: Stammer-Architects
IMAGE: B plus media







KONVORTEC® indoor

In internal areas, too, Konvortec® indoor offers excellent solutions for the design of wall surfaces. Here, too, there are no limits to new ideas. The planner and architect has the opportunity to combine other products such as system glass panels. As shown by the example 'Foyer Hotel Spatzenhof' the combination of old & new creations tension and leaves a lasting impression.

The Konvortec® minimum bracket creates a particularly filigree appearance in interiors when using system panels. Modern and creative accents are set by combining the Konvortec® glass panels with leather, wood, plastic and/or metal surfaces.

LEFT: Different surfaces or partial backlighting allow an almost limitless scope for design.





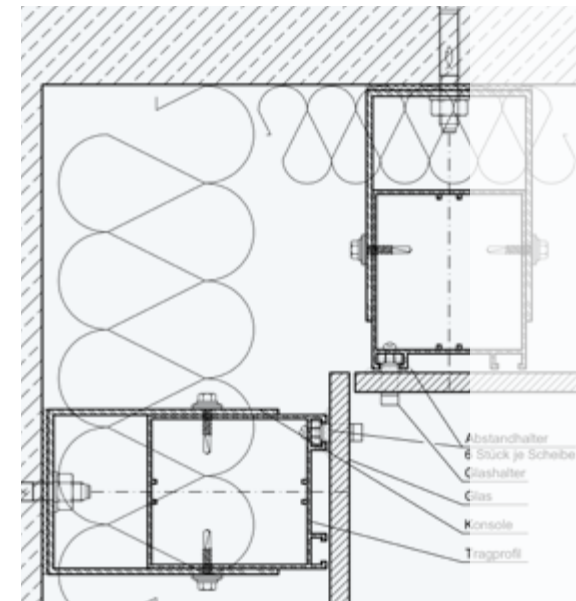
KONVORTEC® energy

Photovoltaics. Solar systems for electricity or heat generation are becoming increasingly important due to continually increasing energy costs. Whether as a subsequently added solar system or integrated into the glass facade - Konvortec® provides a solution for either type of installation. Not least because of the price advantage opposite other systems, the cost-effectiveness of a solar system already begins at the planning and construction stages.

Competition. The university of Wuppertal has successfully applied to participate in the 'Solar Decathlon Europe 2010' in Madrid. The goal of the team of students was to develop and build a house of the future that is supplied 100% with solar energy. The Konvortec® system was used in implementing the concept because of its visual and structural advantages.

UPPER RIGHT:

MIDDLE AND LOWER RIGHT: Impressions of the solar object of Team Wuppertal for competition exhibition in Barcelona.



TEAM
WUPPERTAL
2010

SOLAR DECATHLON
EUROPE



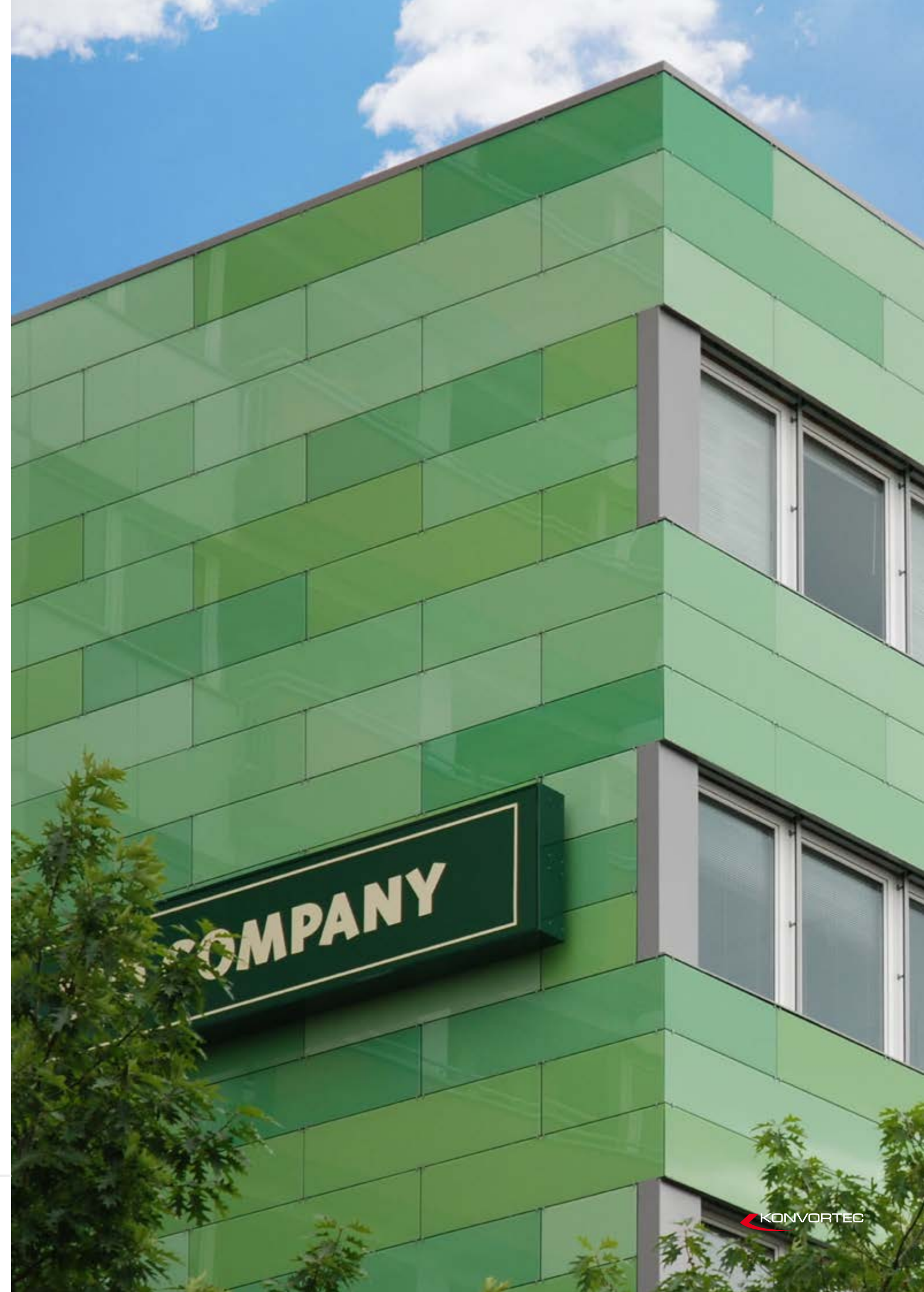
The solar object of Team Wuppertal for competition exhibition in Barcelona.



Contemporary.

The street facade of this medical centre from the seventies was to be refurbished because both the insulation and the cladding of the facade were no longer contemporary. The suspended, back-ventilated Konvortec® facade system was installed following the removal of the old elements down to the building shell. Special wall plugs were used for anchoring the substructure because of concrete parapets with a thickness of only 80 mm. With 140 mm heat insulation the facade is once again ready for the future. The suspended Konvortec® system glass panels in five specially matched shades of green ensure the reliable long-term protection of the facade and make the building an eye-catcher at the busy intersection immediately adjacent to the Spandau railway station.

UPPER LEFT: Front view before the refurbishment.
LOWER LEFT AND RIGHT: Front and detailed views of the refurbished medical centre in Berlin, planned by the ch-quadrat architect's office.





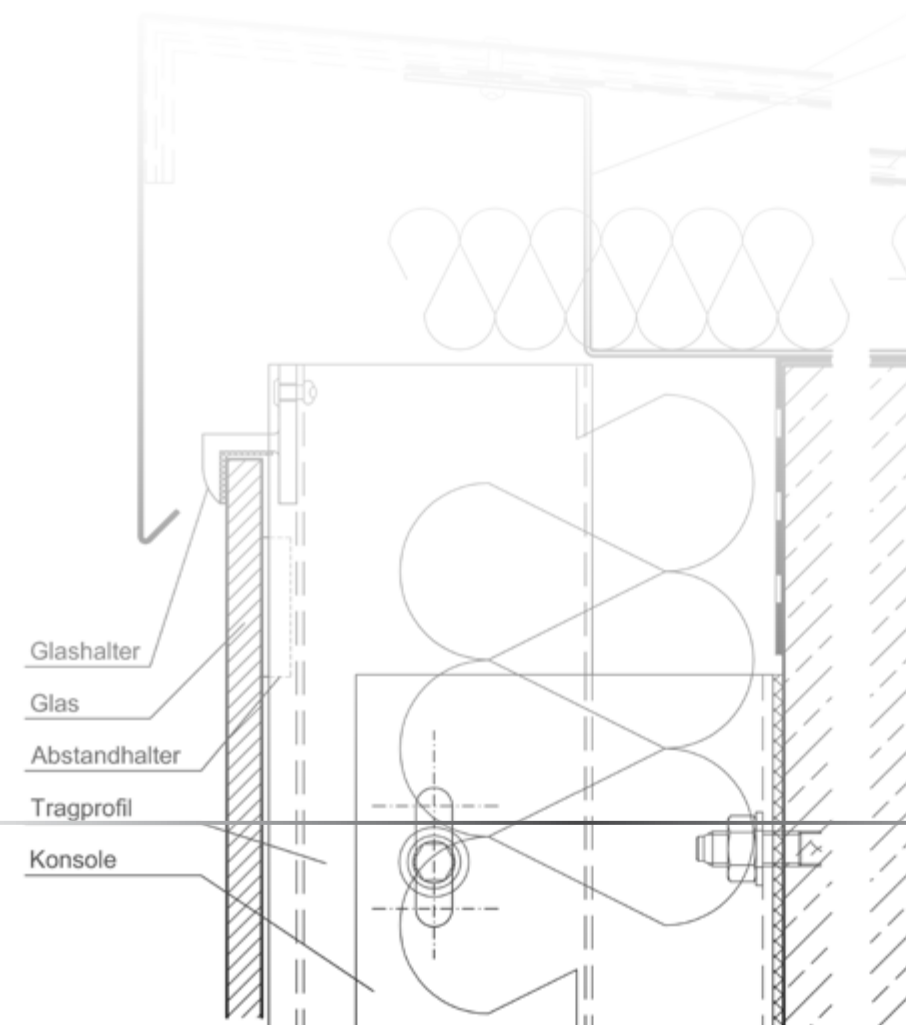
Unique.

This facade presents itself in a unique design matched to the CI with the raised part logo of the resident company.

The three-dimensional initial letters of 'Itelligence AG' are illuminated at night emphasising an outstanding facade in Bielefeld, Germany.

The sophisticated system leaves maximum freedom of design in terms of choice of colour and format.

RIGHT: Consistent corporate image right through to the external facade.





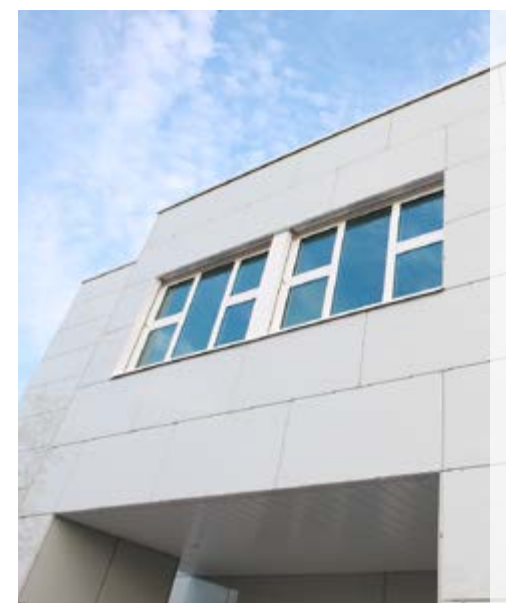
Impressive overall view through the incorporation of backlit logo elements into the facade design.



Visually Sensitive.

The new building for the Liver and Infection Centre (LIZ) was creatively integrated into the overall architectural profile of the University Hospital of Düsseldorf, yet in a way mindful of the existing campus. The system glass panels of the Konvortec® glass facade produce an orthogonal panel pattern and create, together with the restrained RAL 9002 coloured glass panels, an overall impression of the building which is appropriate to its function.

This project represents an interesting visual variation in the use of glass facades, and the architect has succeeded in its execution here with the use of Konvortec® system glass.





An extension to a single-family house. A futuristic cube of glass.



Individual solutions.

Freedom of form – the Fraunhofer Institute in Braunschweig, Germany. This facade incorporates curved glass segments that were manufactured in a special process. In this design option, too, the Konvortec® facade system demonstrates its great advantages: Utilisation of the existing system components, no custom production during construction, problem-free combination of different facade components, exact realisation of the architectural specifications. The result is an exclusive facade with a high recognition value, which virtually 'flows around' the building.

RIGHT: The Konvortec® system offers optimised solutions for many tasks.





A meeting of epochs: a medieval ruin contrasting with a futuristic new building.



Proven function and new aesthetics.

Situation art. This building poses a challenge of the very special kind. This annex is located in the old ruin and forms part of the building ensemble in the park of the Weimar House in Bochum, Germany. The new Art Cube is intended to house temporary exhibitions. The images show how tense the communication between old and new can be. Here we can see a renewed understanding of efficient and lasting facade technology. The Konvortec® glass facade is a contemporary, cost-effective and sustainable solution.

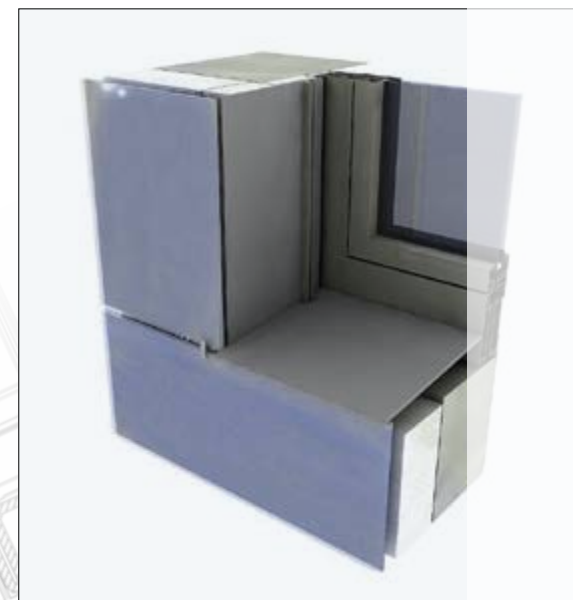




From idea to completion.

You have an idea – we help you to realise it. We are the right people to talk to, from the first step, the draft, through the further planning and visualisation right through to the final step, the completion. With many years experience and the specialist knowledge of the facade systems manufacturer we are available throughout the entire project, provide construction technology information and useful advice. If desired, we take on special tasks such as draft sketches, detail planning, architecture or visualisations right through to the complete execution.

RIGHT: Visualisation of projects in the design phase - an excellent decision-making aid for principals and clients.





Limitless design.

Sophisticated design needs freedom. The rich choice of colours and decors provides planners and architects with numerous options in the realisation of facades built with Konvortec® system glass, and the flexible technology of the Konvortec® system serves as a valuable and useful facade planning tool. The facade elements are available in a wide variety of dimensions. Planning specifications can be exactly realised.

Colour diversity. Almost the entire RAL colour palette is thinkable in addition to the comprehensive standard colours from white through grey to black. Special colours following other colour systems are also possible. Additional design impulse arise from the possibilities of

- multicoloured prints
- form and decor prints
- gap illumination
- background illumination

Screen printing offers a wide range of colours and decor motives for an individual design. Colour deposits from a soft shimmer to extreme density can be realised on the print surface. Environmentally friendly ceramic paints guarantee optimum safety. Over 400 standard decors are available from stock and, thanks to digital printing technology, there are almost no limits to creativity. The facade gains a high priority in the overall context of facade design.



Landhotel Voshövel, Schermbeck



Hospital Schweinfurt



Private home, Ahaus



Privat home, Goch



Opel Bauer, Cologne



Kunsthalle Recklinghausen



PSD Bank Düsseldorf



Villa Kreiling, Düsseldorf



DST Duisburg



Spiel Station Oberhausen



Private sauna, Dorsten



Emschergenossenschaft, Essen



KONVORTEC®

Ease of installation

The Konvortec® system makes it possible to achieve high installation performance.

- widely spaced support profiles
- large panel dimensions
- specified glass pane holder positions
- easy segmentation into construction phases
- safe and reliable work

Installation with know-how

The Konvortec® system is not only impressive because of the final visible result. The system's well thought-through technology already becomes apparent during the installation of the substructure. The substructure consists of a wall bracket or a U-shaped wall mounting system as standard. Vertical T-profiles or hollow profiles for receiving the glass pane holders are bolted to this substructure in the next step.

Claim

The Konvortec® system has an ambitious goal: In addition to a cost-effective and visually flawless facade solution that complies with building regulations it also meets all expectations with regard to flexibility and precision, efficiency and design load, weather protection and ease of maintenance (e.g. Active Glass).

Cost-effectiveness

The system's innovative technology fully meets the customer requirements regarding quality and price.

- cost advantage over other systems
- optimised work flow during installation
- long service life due to the use of high-quality components made from glass and aluminium and an especially weather-resistant rubber material
- extreme resistance to shock, impact and bending tension as well as thermal loads
- easy replacment of the glass segments (in case of colour or design changes on the building)
- optionally sealed with a selfcleaning coating (Active Glass)

Service

In addition to the production and delivery of the system components we also offer our customers the installation of their facade by our experienced and qualified installation department. Regular training of our staff in the areas of health and safety at work, environmentally aware working and modern technologies form the basis for a reliable cooperation.

Contact

Are you interested in our glass facade system? Please contact us if you would like to receive further information or if you are already planning a concrete project. We will contact you as soon as possible.



KONVORTEC® glass facades
High-quality, technologically mature system for structurally suspended glass facades.
New and old buildings
Private and commerce
Redesigns
Energy saving measures



Stadtwerke Herne
Page 6



Officina Vidre Negre,
Cuneo, Italy
Pages 8, 9, 10/11



Family villa, Bottrop
Page 13



Volksbank Lüdenscheld
Lüdenscheld
Pages 14, 15



Administration building
Dortmund, Planetenfeldstraße
Pages 16, 17



Medical centre, Berlin
Spandauer Bahnhof
Pages 36, 37



University Hospital Düsseldorf
Pages 42, 43



Fraunhofer Institut
Research dept., Braunschweig
Pages 46, 47



Museum building
Park Haus Weitmar, Bochum
Pages 48/49, 50, 51



Extension to a single-family house,
Düsseldorf
Pages 44/45



Office building,
Georgsmarienhütte
Page 56

KONVORTEC® shine
Background illumination for matte or mirrored facade glass panes. Integrated screening of hidden TV screens.



Konvortec, Company premises
Schermbeck
Page 19



Konvortec, Company premises
Schermbeck
Pages 20/21



RWW Headquarters
Mülheim an der Ruhr
Pages 22, 23



Energy consultation centre
Stadtwerke Schorndorf
Pages 24/25, 26, 27



Itelligence AG, Bielefeld
Pages 38, 39, 40/41

KONVORTEC® indoor
System variant for interior applications.
Optimised dimensions, almost unlimited choice of materials and colours.



Hotel Spatzenhof
Wermelskirchen
Page 28/29



Konvortec, Restroom
Schermbeck
Page 30, 31



Konvortec, Office rooms
Schermbeck
Page 31

KONVORTEC® energy
Extended facade system for photovoltaic modules.
artial facade or standalone solution for energy generation.



Solarobjekt, Wettbewerbs-
ausstellung Barcelona
Pages 32, 33, 34/35

The aesthetics of an object emerge from its function.



Visit us on Facebook

Konvortec GmbH & Co. KG
Kapellenweg 64
D-46514 Schermbeck

Phone: +49 (0) 28 53 / 9 50 09-0
Fax: +49 (0) 28 53 / 9 50 09-9
Email: info@konvortec.de
Internet: www.konvortec.de