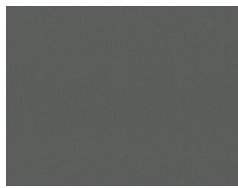


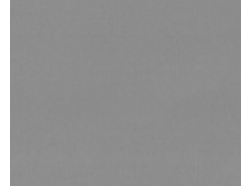
**LAGERWARE IN-COMPO 9000**  
**IN-COMPO 9000 MATERIALE DISPONIBILE IN PRONTA CONSEGNA**



Anthracite Grey  
90-716-0912  
4 mm 4000x1500  
FR: B-s1,d0



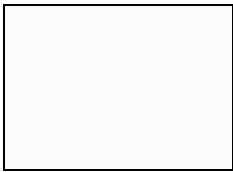
Titanium  
90-935-0912  
4 mm 4000x1500  
FR: B-s1,d0



Silver  
90-906-0912  
4 mm 4000x1500  
FR: B-s1,d0



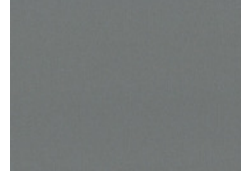
Ultramarine Blue  
90-502-0912  
4 mm 4000x1500  
FR: B-s1,d0



Signal White  
90-903-0912  
4 mm 4000x1500  
FR: B-s1,d0



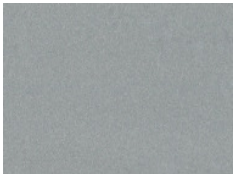
Champagne  
90-930-0912  
4 mm 4000x1500  
FR: B-s1,d0



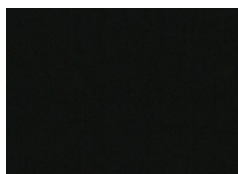
Grey Aluminium  
90-907-0912  
4 mm 4000x1500  
FR: B-s1,d0



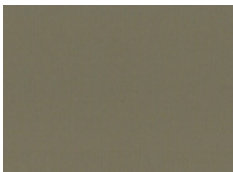
Ruby Red  
90-303-0912  
4 mm 4000x1500  
FR: B-s1,d0



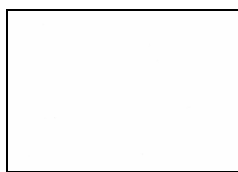
Bright Silver  
90-B906-0912  
4 mm 4000x1500  
FR: B-s1,d0



Metallic Black  
90-M905-0912  
4 mm 4000x1500  
FR: B-s1,d0



Bronze  
90-940-0912  
4 mm 4000x1500  
FR: B-s1,d0



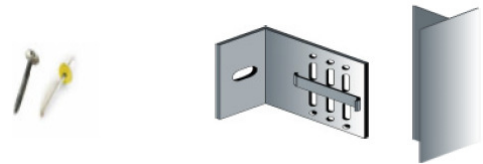
Traffic White  
90-916-0912  
4 mm 4000x1500  
FR: B-s1,d0

**Auch lagernd:**

**IN-FIX** Alu-Unterkonstruktionen lagernd  
**IN-AX** Zubehör: Schrauben, Nieten lagernd  
**IN-SERVICE** CNC-Verarbeitungen, Zuschnitte

**Disponibile anche:**

**IN-FIX** sottostruttura in alluminio a magazzino  
**IN-AX** accessori: viti, rivetti a magazzino  
**IN-SERVICE** lavorazioni CNC, tagli



Abweichungen der Dekorabbildungen von den Originalmustern sind drucktechnisch bedingt. Für die Farbwahl bitte immer die Originalmuster verwenden.  
Le produzioni industriali possono differire dalle tinte rappresentate sul depliant, che sono indicative. Si prega di utilizzare sempre i campioni originali per la scelta del colore.

Für weitere Informationen und bezüglich lagernde Mengen, wenden Sie sich bitte an das Verkaufsbüro von INPEK.  
Per ulteriori informazioni, e le quantità disponibili in pronta consegna, si prega di consultare l'ufficio vendite di INPEK.

Sicherheitshinweis: technische Normen der Hersteller und gesetzliche Richtlinien für korrekte Anwendung immer prüfen und beachten! INPEK übernimmt keine Haftung!

Nota di sicurezza: controllare e rispettare le direttive tecniche del produttore e le norme vigenti! INPEK declina ogni responsabilità!